

CONSTRUCT SUMP PUMP-104  
CPID 1007885

<u>ADDRESS CROSS REFERENCE</u>	
<u>BLDG. NUMBERS</u>	<u>STREET ADDRESS</u>
BLDG. 445 CIVIL ENGINEERING	445 PEACEKEEPER PLACE
BLDG. 445 CONSTRUCTION MANAGEMENT	445 PEACEKEEPER PLACE
BLDG. 165 CONTRACTING OFFICE	165 MISSILE AVENUE

## INDEX OF DRAWINGS

SHT. NO	REF. NO	DESCRIPTION
1	T-1	TITLE SHEET/LOCATION PLAN
2	C-1	SP-104 SITE PLANS B-09 & B-10
3	C-2	SP-104 SITE PLANS K-05, K-09, L-10 & DETAILS
4	S-1	SP-104 MANHOLE & GRATE DETAILS
5	E-1	ELECTRICAL PLAN DETAILS & NOTES
6	E-2	ELECTRICAL PLAN DETAILS & NOTES (CONT.)
7	E-3	ELECTRICAL PHOTO DETAILS & NOTES (CONT.)

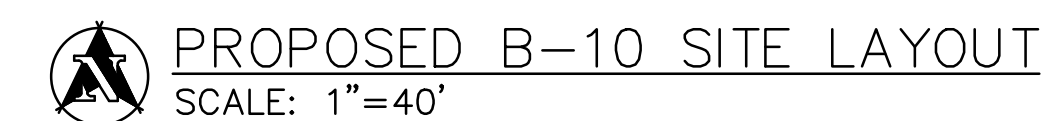
MY SIGNATURE ON THE  
TITLE SHEET APPROVES  
THIS AND ALL SHEETS IN  
THIS PROJECT



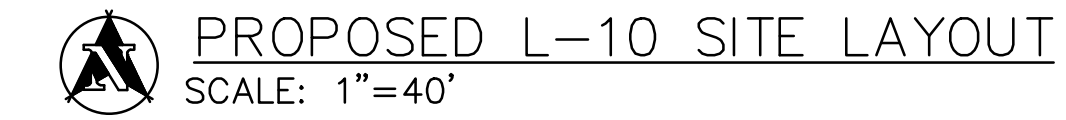
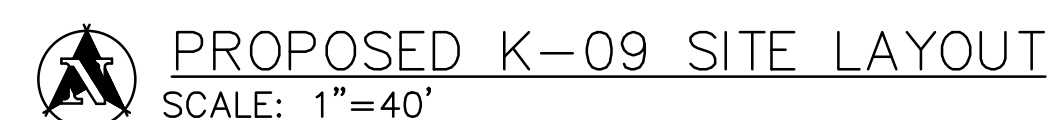
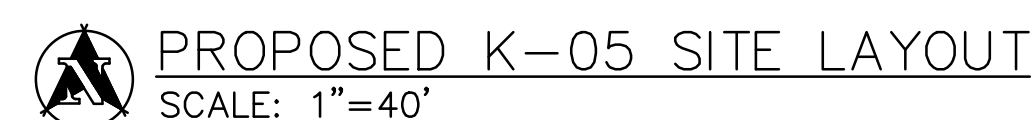
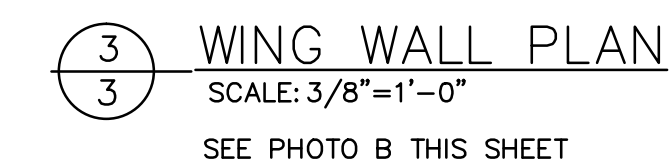
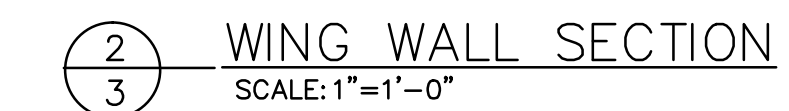
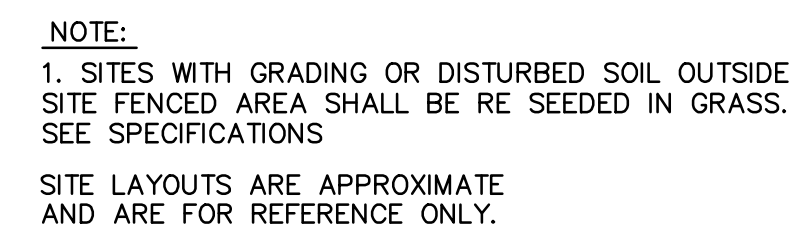


APPROVED

SHEET TITLE			
SP-104 SITE PLANS			
B-09 & B-10			
SHEET	OF	REF	SHT. NO.
2	7		C-1
PROJECT TITLE			
CONSTRUCT SUMP PUMP-104			
PROJECT NUMBER			
CPID 1007885			
FACILITY		Lfs	

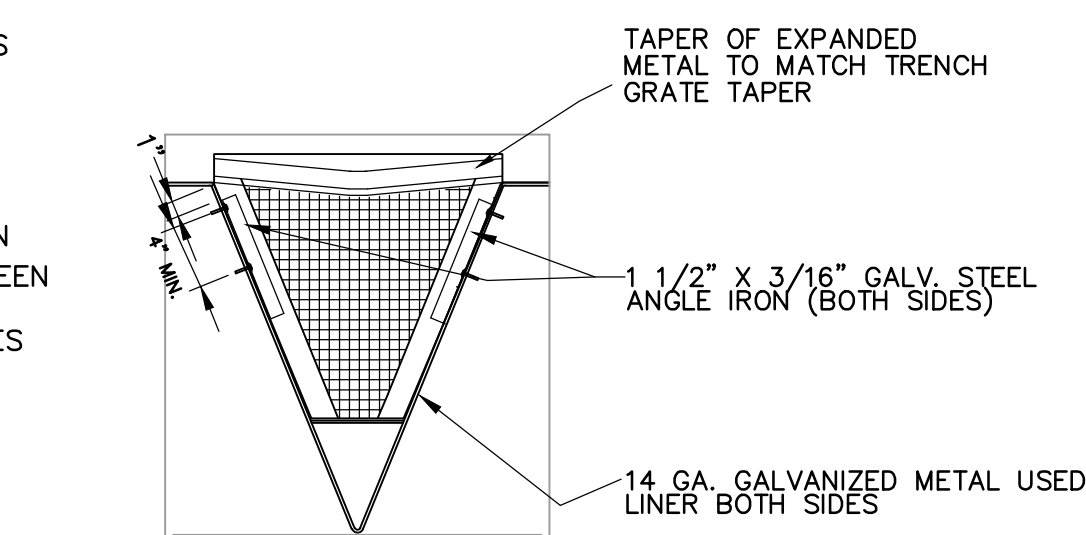
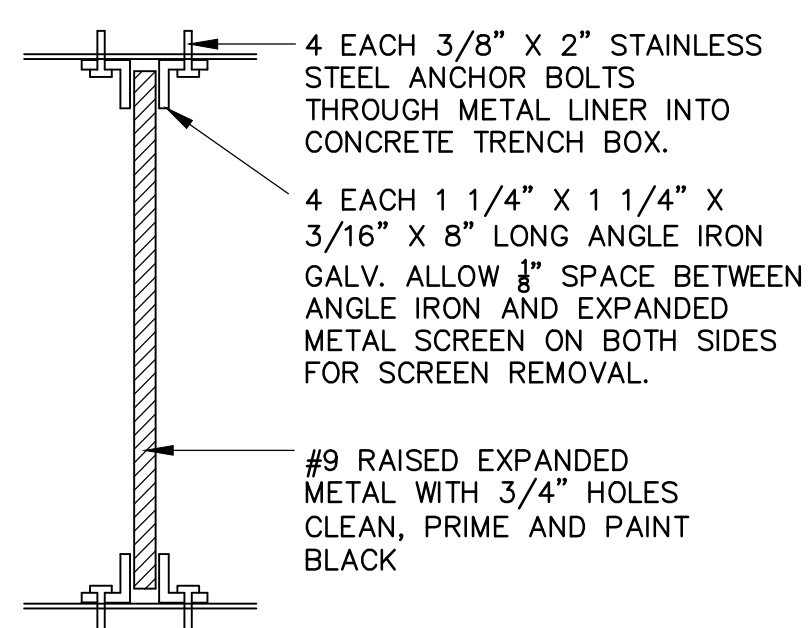
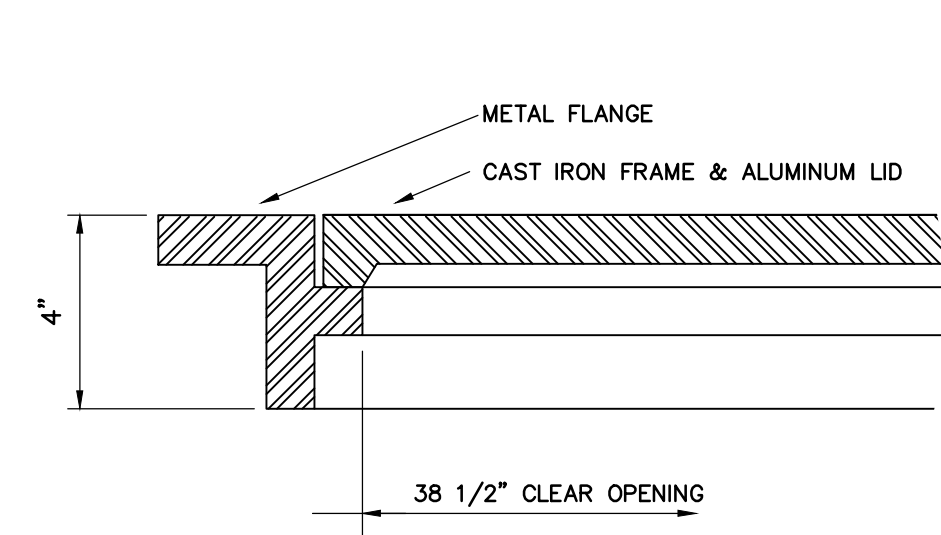






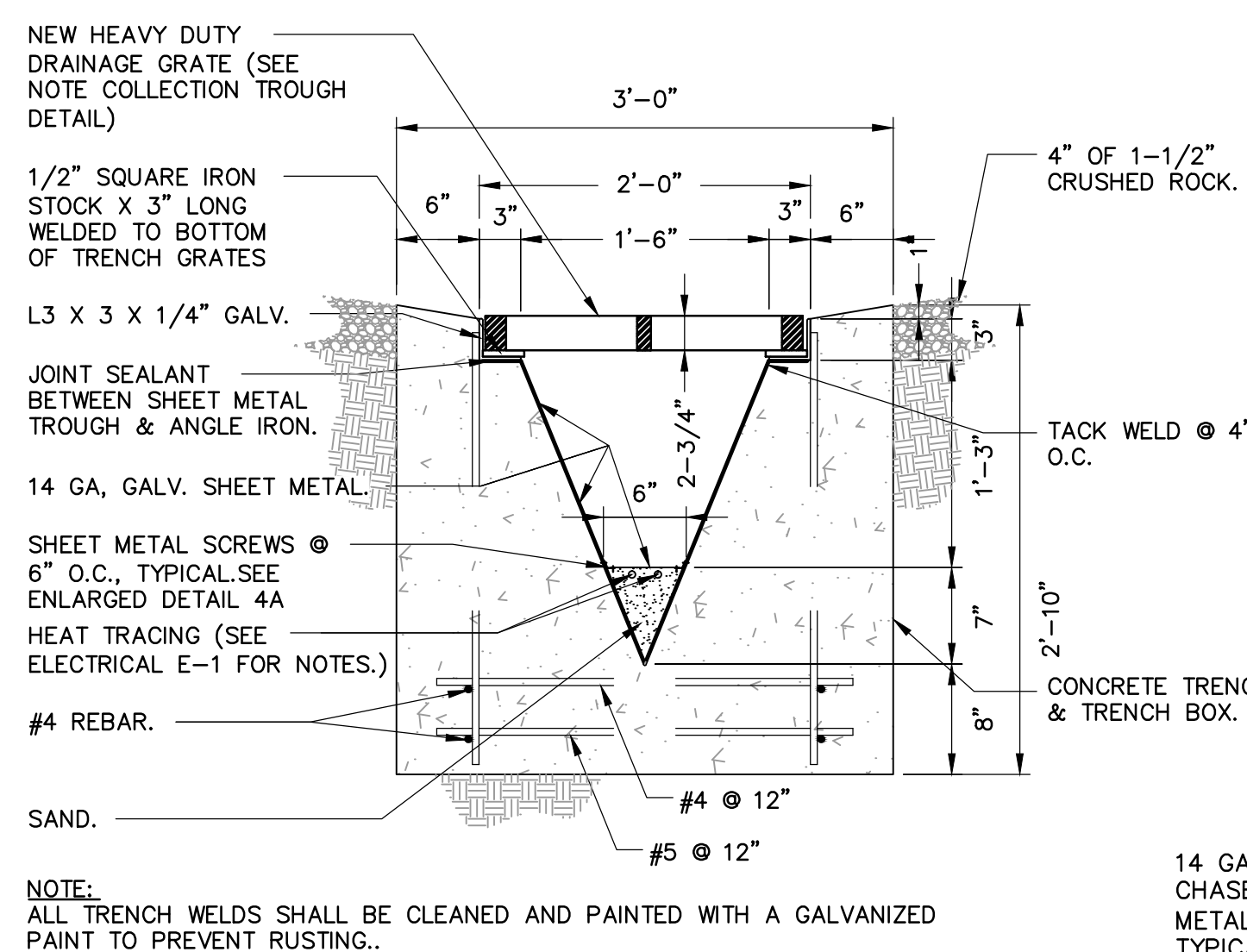


REINFORCED CONCRETE MANHOLE AND CATCH BASIN A-A  
SCALE: 1/2"=1'-0"

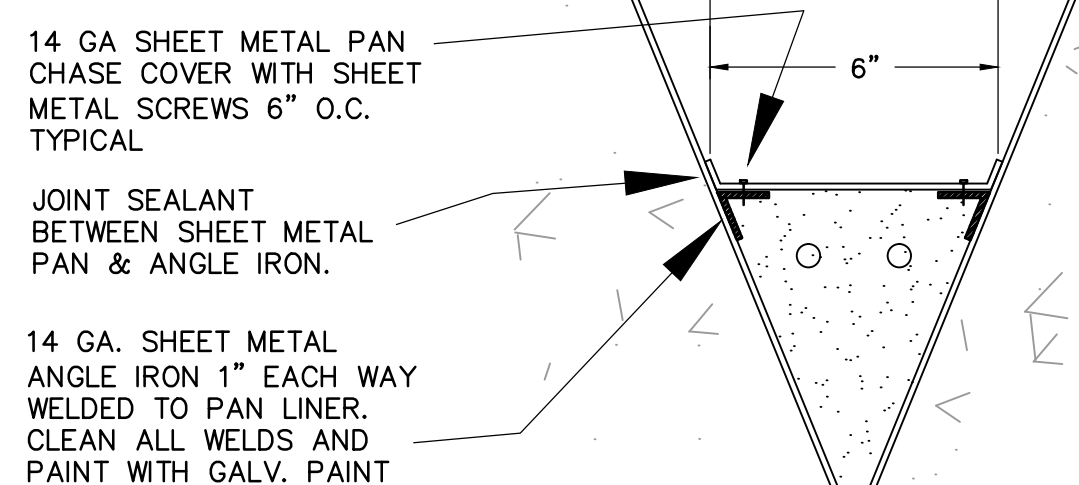


TRENCH SCREEN ELEVATION  
NO SCALE

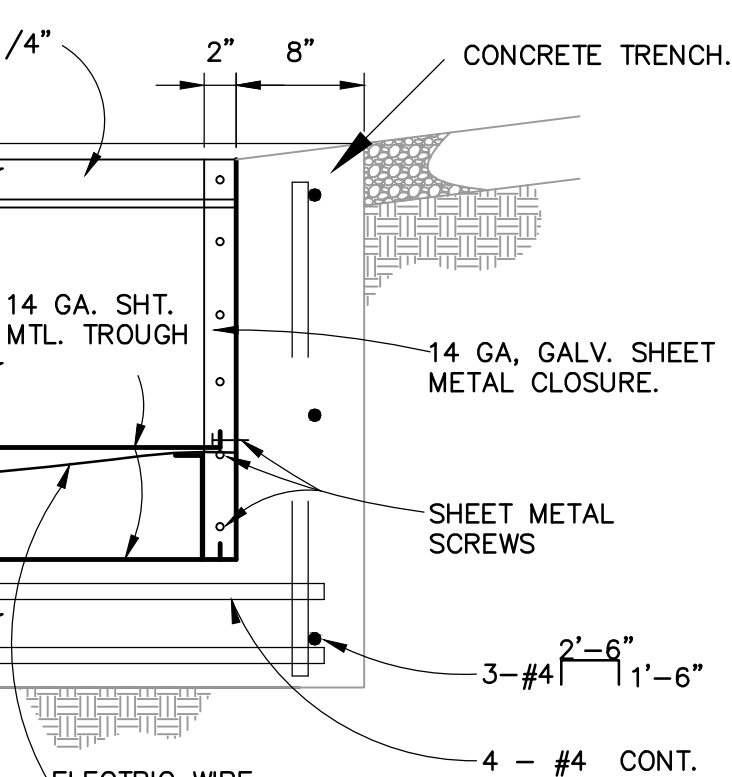
TRENCH SCREEN SECTION (D)  
NOT TO SCALE



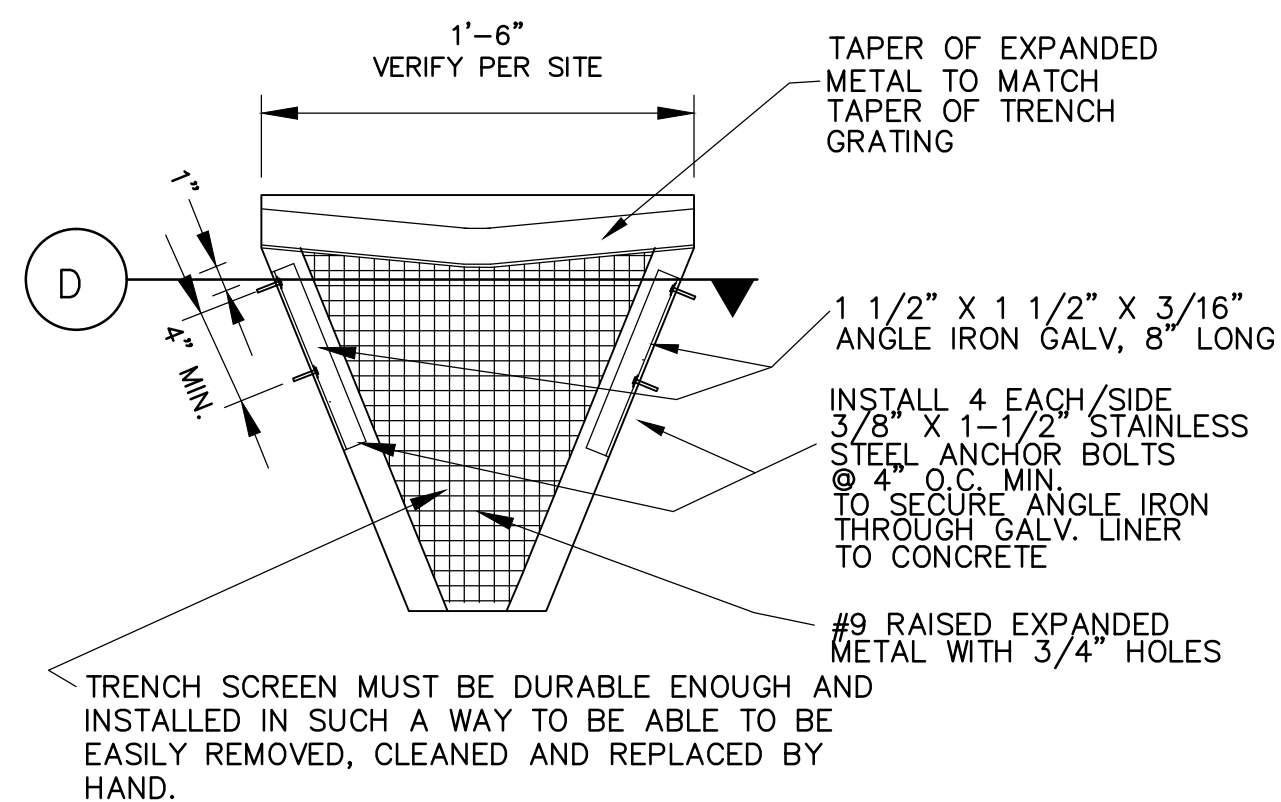
SECTION 4-4  
SCALE: 1"=1'-0"



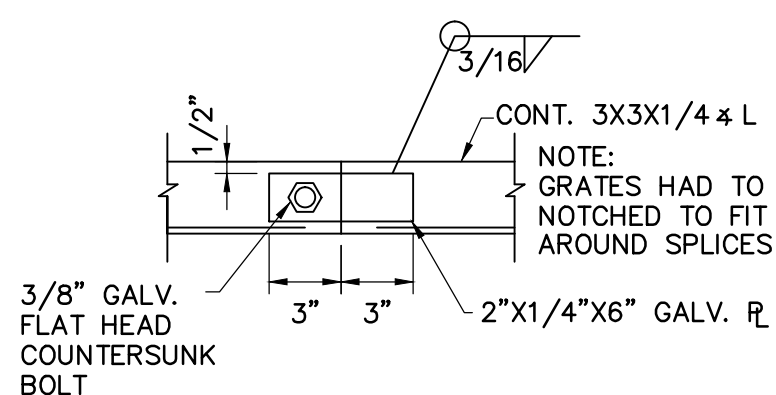
ENLARGED DETAIL 4A



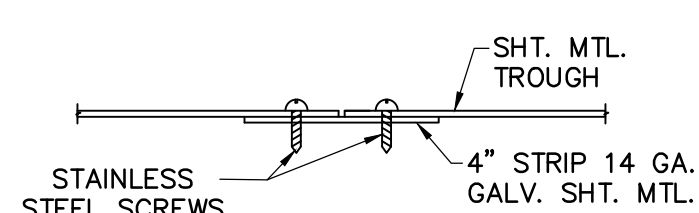
SECTION 5-5  
SCALE: 1"=1'-0"



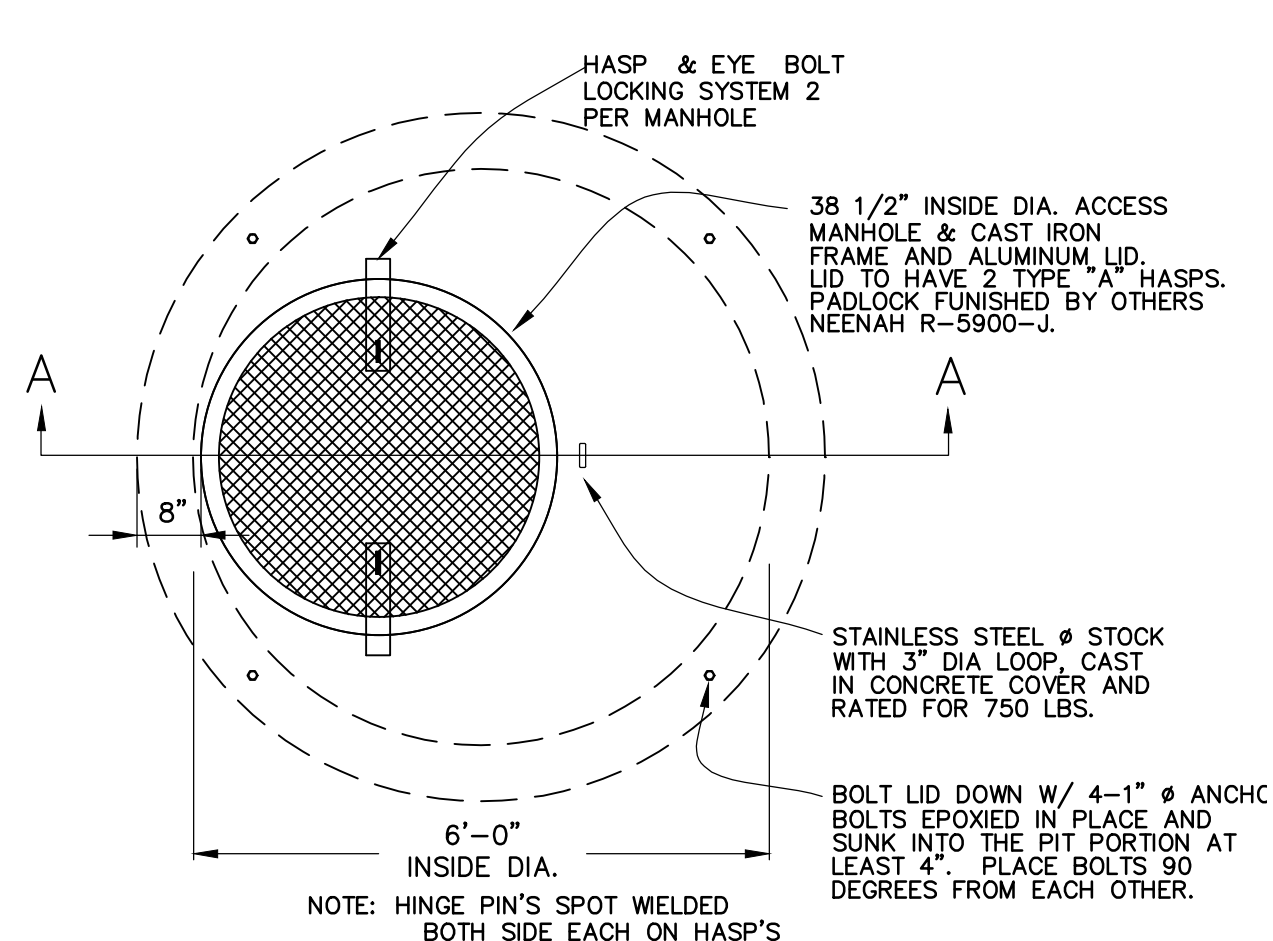
TRENCH SCREEN DETAIL  
SCALE: 1 1/2"=1'-0"



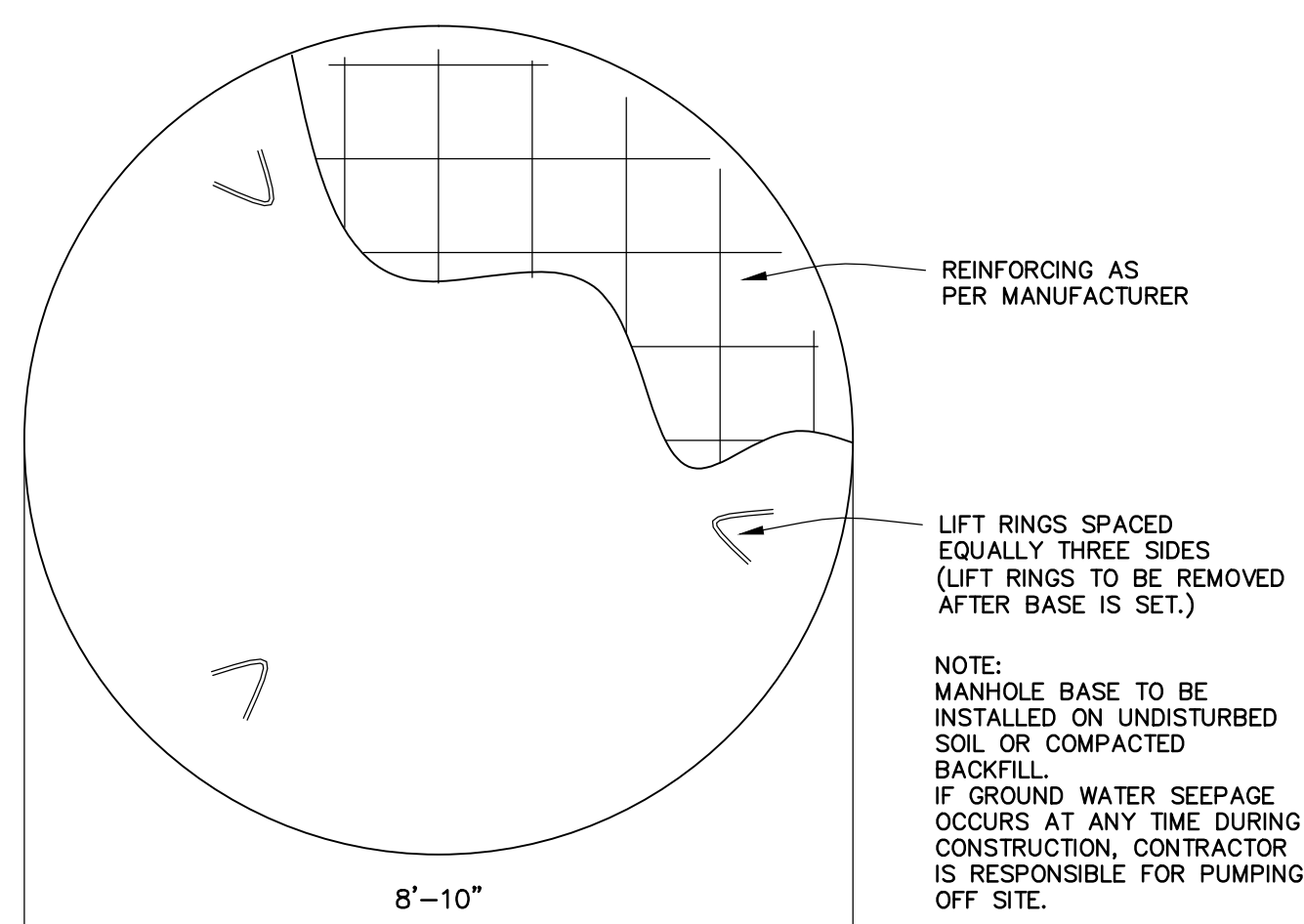
ANGLE SPLICE DETAIL  
SCALE: 1 1/2"=1'-0"



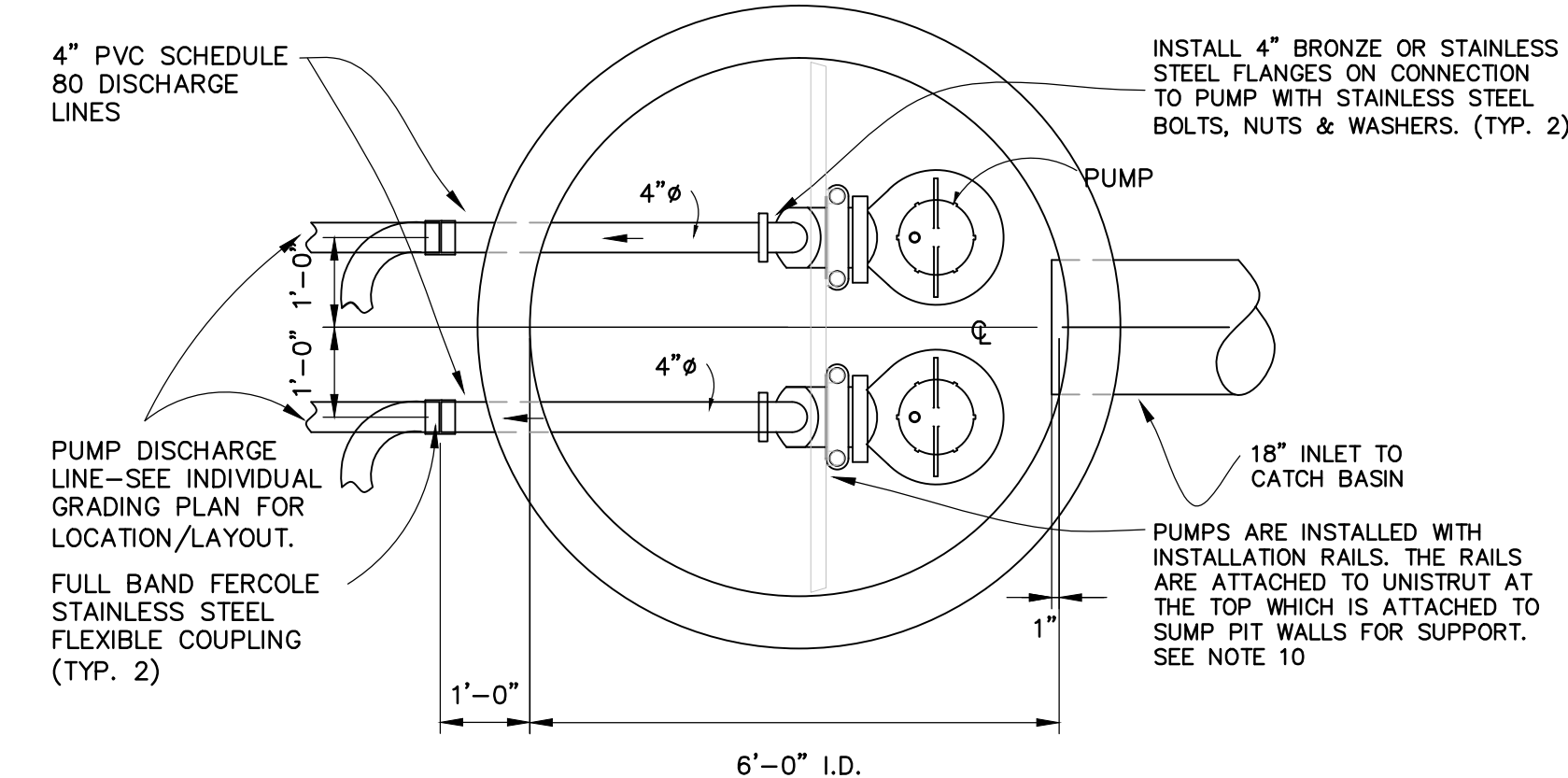
SHEET METAL SPLICE DETAIL  
SCALE: 1 1/2"=1'-0"



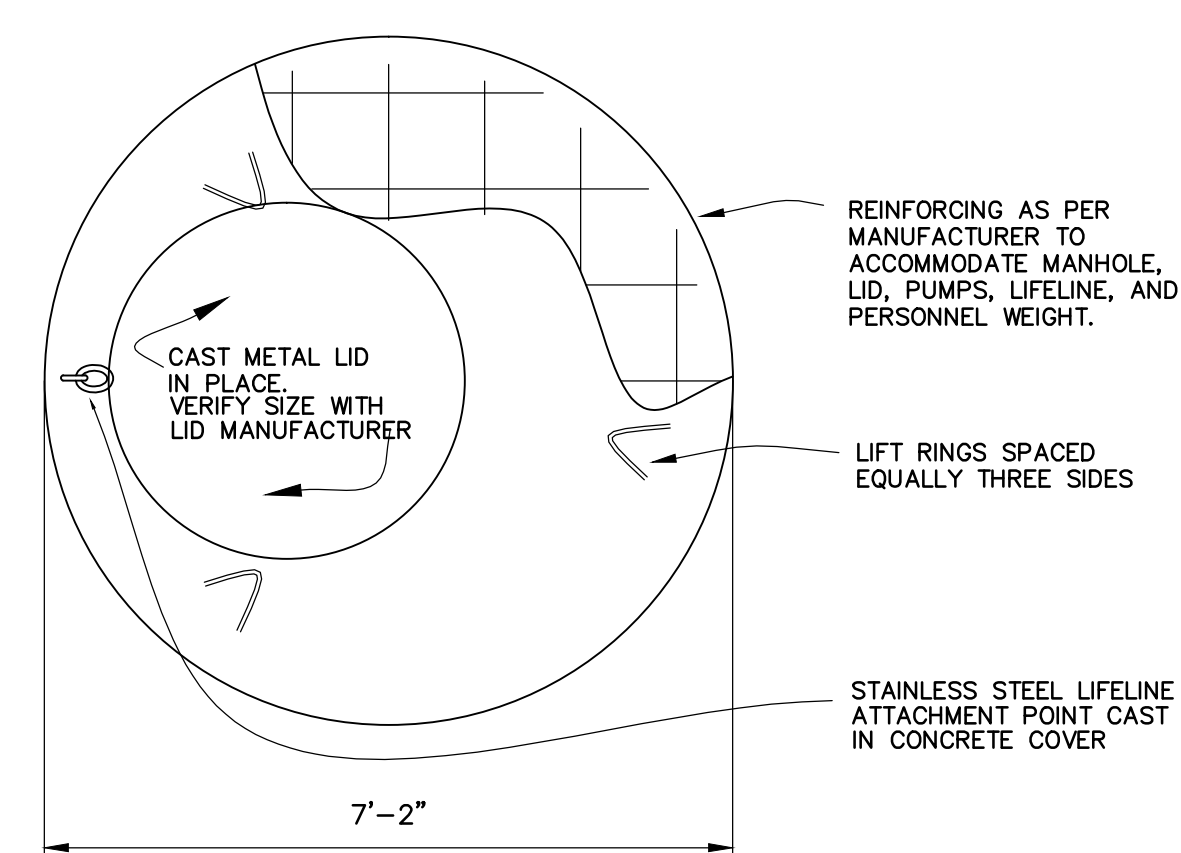
PLAN VIEW  
SCALE: 1/2"=1'-0"



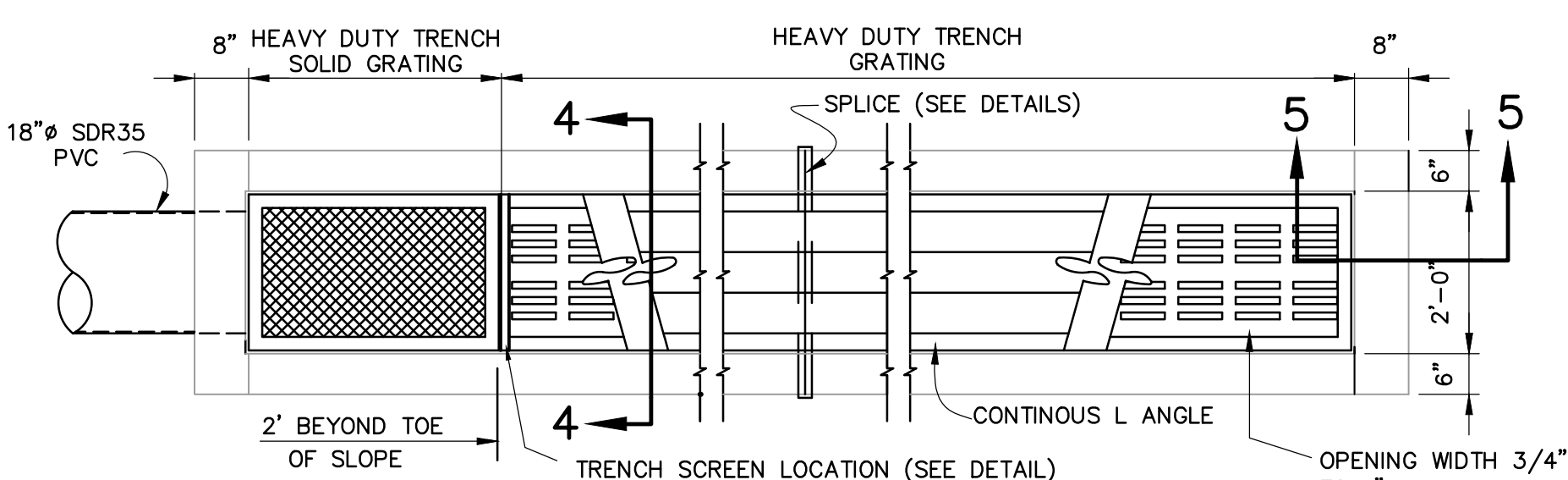
PRECAST BASE PLAN  
SCALE: 1/2"=1'-0"



PLAN B-B  
SCALE: 1/2"=1'-0"

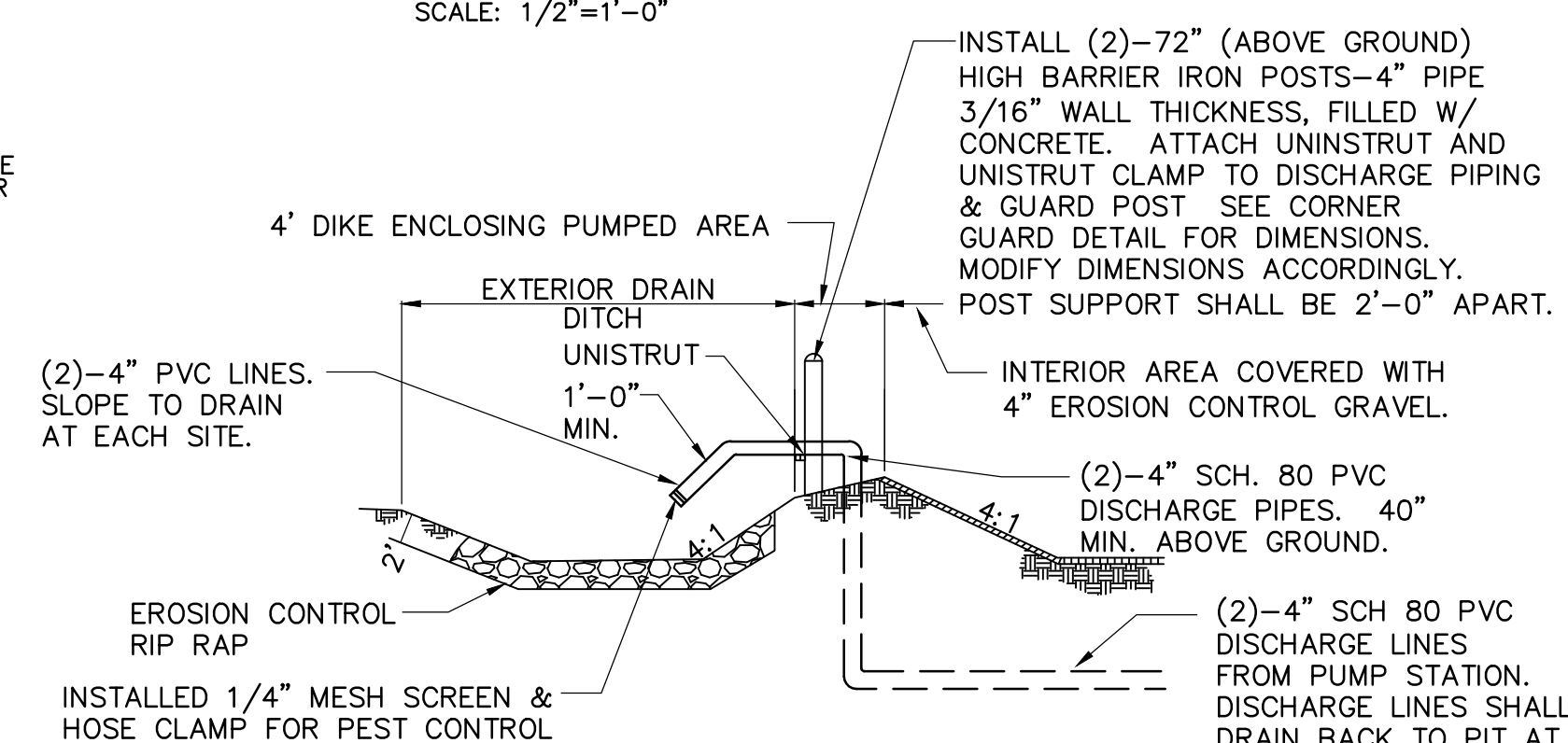


PRECAST COVER PLAN  
SCALE: 1/2"=1'-0"



NOTE:  
ALL GRATES TO BE NEENAH HEAVY DUTY SOLID/GRATED AND SHALL BE GRAY IRON CLASS 35.  
TRENCH IS TO BE SLOPED 1/2% TOWARDS SUMP PIT.  
ALL TRENCH METAL NEW WELDS SHALL BE CLEANED AND PAINTED WITH A GALVANIZED METAL PAINT.

COLLECTION TROUGH  
SCALE: 1/2"=1'-0"



TYPICAL OF PUMP AREA DIKE AND PUMP DISCHARGE LAYOUT  
NOT TO SCALE

Minot  
AFB

North Dakota

APPROVED

[illegible]

SHEET TITLE		
SP-104 MANHOLE & GRATE DETAILS		
SHEET 4	OF 7	REF SHT. NO. S-1

PROJECT TITLE	
CONSTRUCT SUMP PUMP-104	

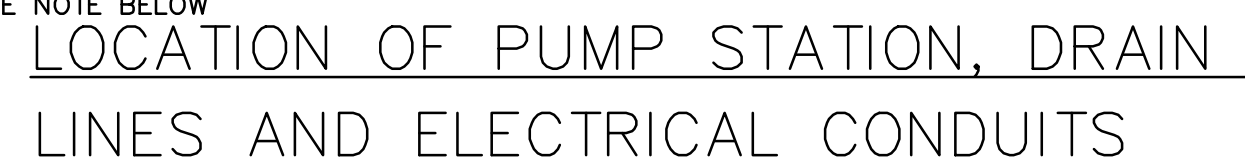
PROJECT NUMBER  
CPID 1007885

FACILITY	LF's
----------	------



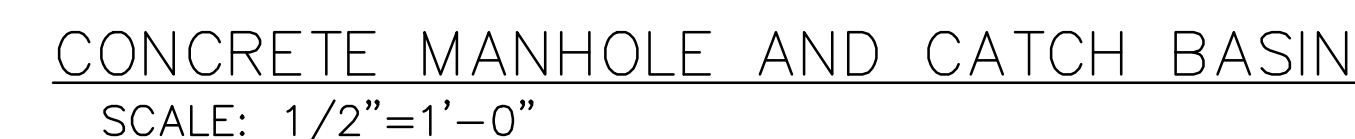


CUT OFF 18" DIAMETER PIPE WITH ONLY A 3/8" REVEAL BEYOND CONCRETE. INSTALL 2' X 2' X #9 NOT FLATTENED EXPANDED METAL. WELD 1-1/2" X 1/8" FLAT IRON AROUND THE PERIMETER ON THE FRONT AND 1-1/2" X 3/8" FLAT IRON AROUND THE PERIMETER ON THE BACK OF THE EXPANDED METAL. DEGREASE, CLEAN, PRIME, AND PAINT WITH BLACK OUTDOOR WEATHER RESISTANT PAINT. FORM EXPANDED METAL PANEL TO THE RADIUS OF THE MANHOLE. SECURE METAL PANEL TO CONCRETE UTILIZING 3/8" X 2" CONCRETE ANCHORS THROUGH FLAT IRON PERIMETER. USE 4 ANCHORS EACH SIDE OR 12 TOTAL.



SCALE: 1/16"=1'-0"

NOTE: INSTALL NEW CORNER GUARDS (4 TYPICAL) IN A SQUARE PATTERN 6" BEYOND OUTER LIMITS OF CONTROL PANEL AND CONCRETE SUMP PIT. TOP OF CORNER GUARD SHALL BE 48" ABOVE GROUND LEVEL. (SEE GUARD POST PLAN THIS SHEET)



\* GENERAL NOTES: \*\* PUMPS SHALL NOT HAVE CHECK VALVES FROM FACTORY, DISABLING OF CHECK VALVES WILL NOT BE ACCEPTABLE.

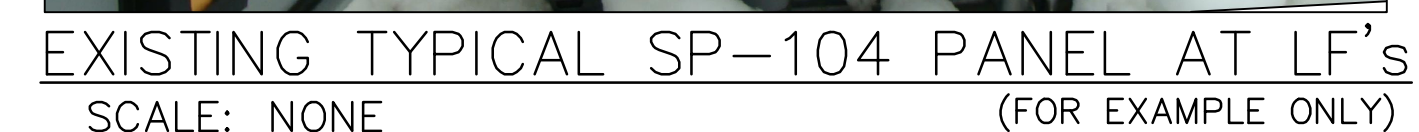
NOTES:

- (1) FLOAT AND MOTOR CABLES ARE NOT TO BE SPLICED IN WIREWAY. THEY ARE TO BE CONTINUOUS FROM FLOAT, MOTOR AND HEATER TO CONTROL PANEL. CONTRACTOR SHALL ORDER CABLE LENGTHS AS REQUIRED TO ELIMINATE SPLICING IN WIREWAY. THE MINERAL INSULATED CABLE IS THE ONLY CONNECTION ALLOWED IN WIREWAY. LEAVE 2 FOOT LOOP ON EACH CORD AS IT PASSES THROUGH WIREWAY.
- (2) ALL CONNECTIONS SHALL BE WATER TIGHT. UTILIZE MYERS HUBS AND CORD CONNECTORS AS REQUIRED. SEE S-1 FOR PUMP AND MOTOR. PUMP BASE TO BE FURNISHED BY PUMP MANUFACTURER.
- (3) INSTALL NEW 2" PVC COATED RSC CONDUIT FROM PUMP CONTROL PANEL TO EQUIPMENT BUILDING PANEL WITH FOUR (4) NEW #1 COPPER THHN/THWN, AND ONE (1) NEW #6 COPPER EQUIPMENT GROUNDING, CONDUCTORS AND FOUR (4) #12 THHN/THWN CONDUCTORS SHALL BE INSTALLED IN CONDUIT. POWER CONDUCTORS TO BE CONNECTED FROM PANEL L4A CB# 43,45,47 TO DISCONNECT TO PUMP CONTROL PANEL, AS REQUIRED. FOUR (4) #12 CONDUCTORS, TWO (2) TO BE LABELED AS SPARES AND THE REMAINING TWO (2) TO BE UTILIZED, AS INDICATED, ON PUMP STATION CONTROL/ENCLOSURE DETAIL AND LF5B FLOOR PLAN. SEE SHEET E-2. CONDUIT SHALL BE BURIED 3'-0" DEEP WITH 3" ELECTRICAL MARKER TAPE 1'-0" ABOVE CONDUIT.
- (4) 2-1/2" x 2-1/2" x 10", 12 GAUGE GALVANIZED SQUARE TUBE STEEL. TUBE SHALL BE SIGN TUBE TYPE AS INDICATED ON EXISTING PUMP STATION PICTURE..
- (5) INSTALL ONE 3/4" x 10' SUPPLEMENTAL GROUND ROD. CONNECT TO PANEL WITH #6 SOLID COPPER WIRE.
- (6) INCLUDES MEYERS LIFT OUT RAIL ASSEMBLIES PART NO. SRA FOR GOULDS MOTOR & PUMP.
- (7) INCLUDES ADVANTAGE STAINLESS STEEL 1/4" CHAINS PART NO. SSHT250 & INCLUDES ADVANTAGE 1/2" SHAKELS PART NO. SSPAS000BOW.
- (8) CONTRACTOR SHALL PROVIDE ADEQUATE WATER TO EACH SITE TO VERIFY CORRECT FLOAT AND PUMP OPERATION AND ROTATION.

GENERAL NOTES:

PICTURES ON E-1, E-2 AND E-3 ARE PICTURES OF EXISTING SP104 SYSTEMS AT SITES THAT ALREADY HAVE SP-104s INSTALLED ON THE SITES. THERE ARE NOT EXISTING SP-104s, TROUGHS, PITS AND RELATED EQUIPMENT AT SITES SPECIFIED IN THIS CONTRACT. EVERYTHING WILL BE NEW CONSTRUCTION.

PICTURES ON E-1, E-2 AND E-3 INDICATE HOW THE SITES SHOULD LOOK UPON COMPLETION OF THE NEW SP-104s, TROUGHS, PITS AND RELATED EQUIPMENT.



North Dakota

APPROVED

SHEET TITLE
ELECTRICAL PLAN DETAILS & NOTES

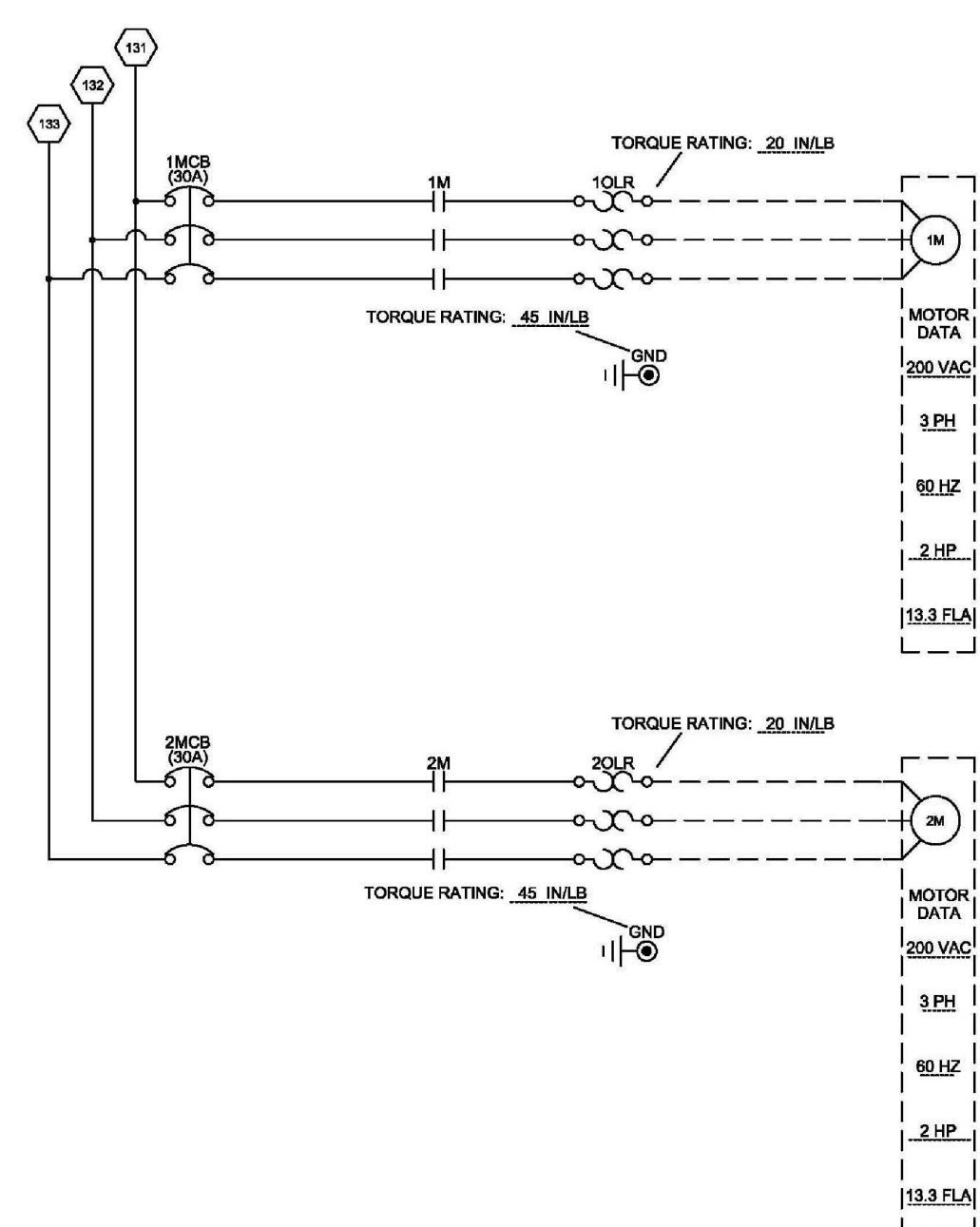
SHEET 5	OF 7	REF SHT. NO. E-1
PROJECT TITLE		

CONSTRUCT SUMP  
PUMP-104

PROJECT NUMBER	CPID 1007885
----------------	--------------

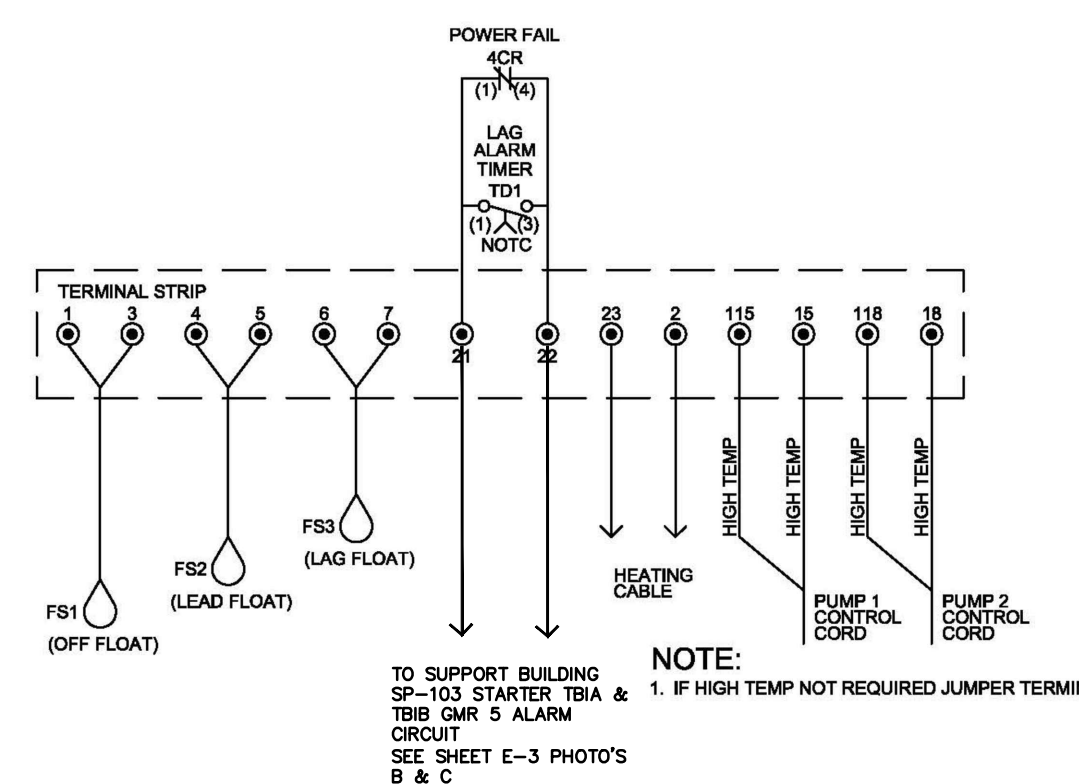
FACILITY	LFs
----------	-----





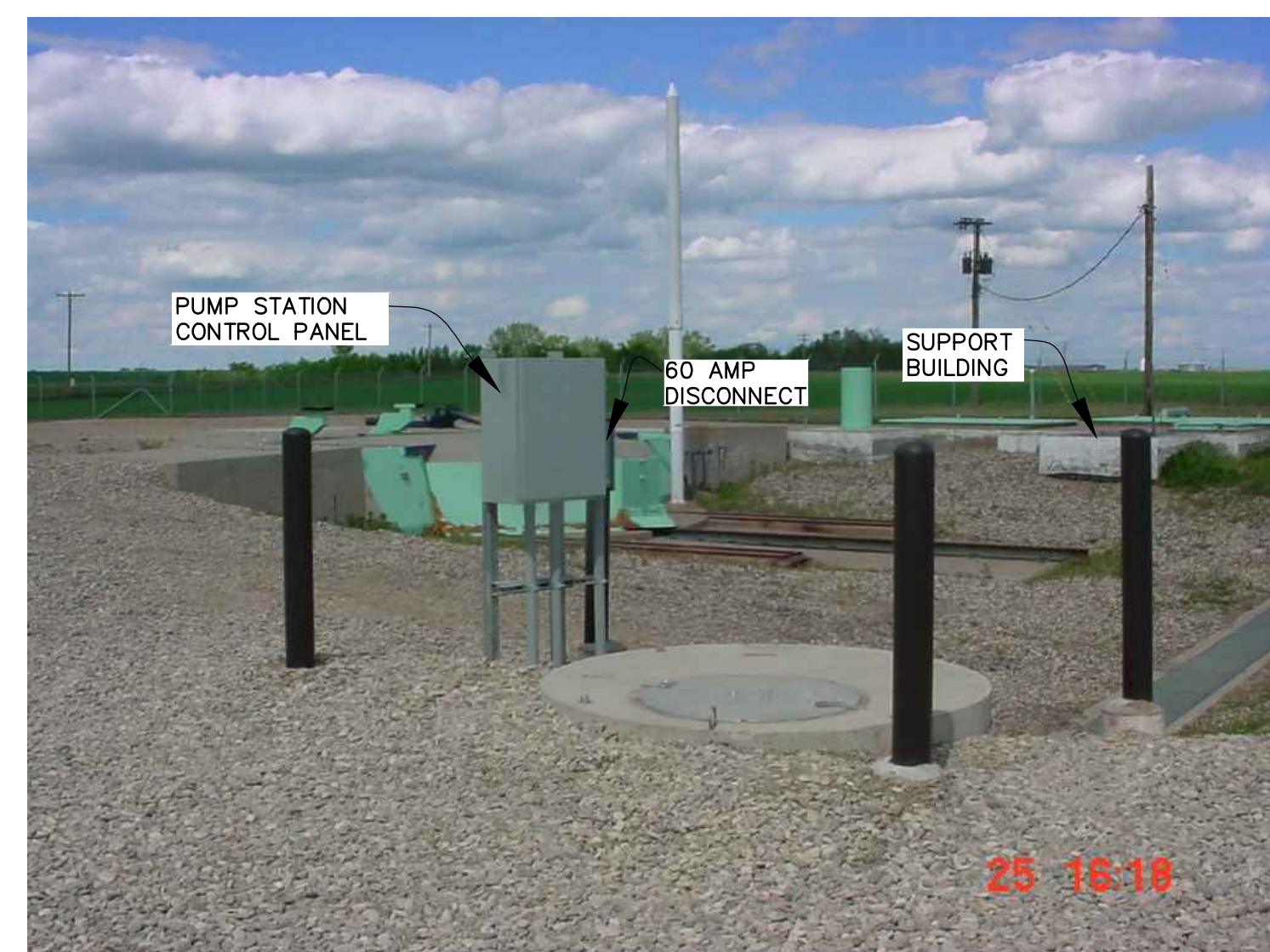
NOTE: NO APPROVED EQUALS 

NOTE: NO APPROVED EQUALS 



SCALE: NONE

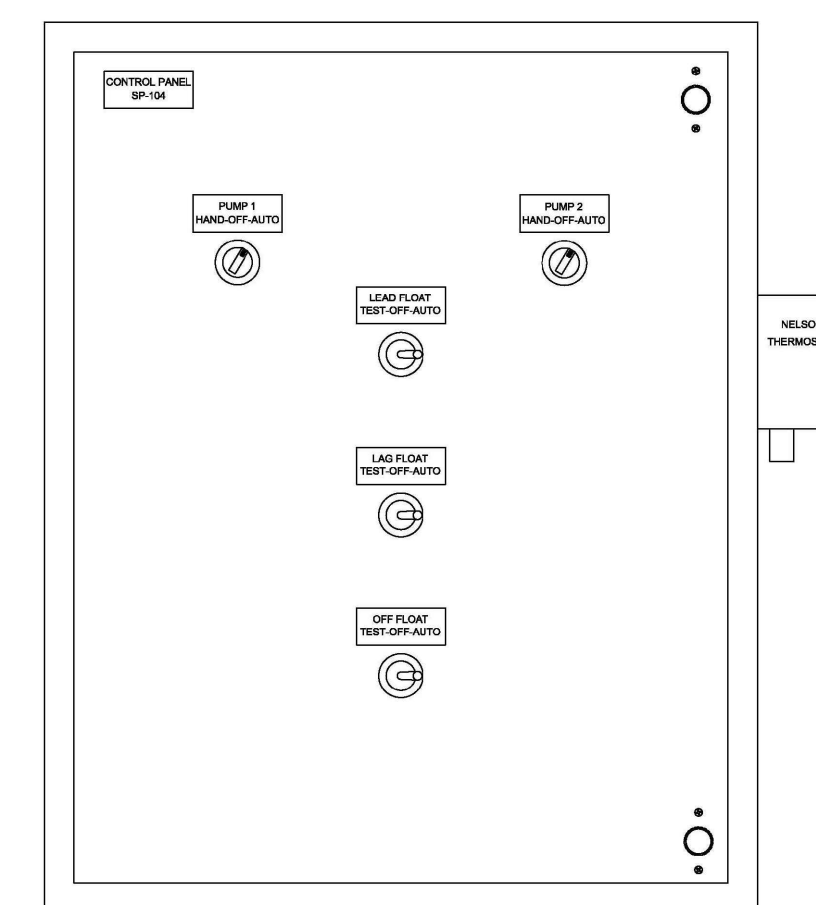
NOTE: NO APPROVED EQUALS 



SCALE: NONE (FOR EXAMPLE ONLY)

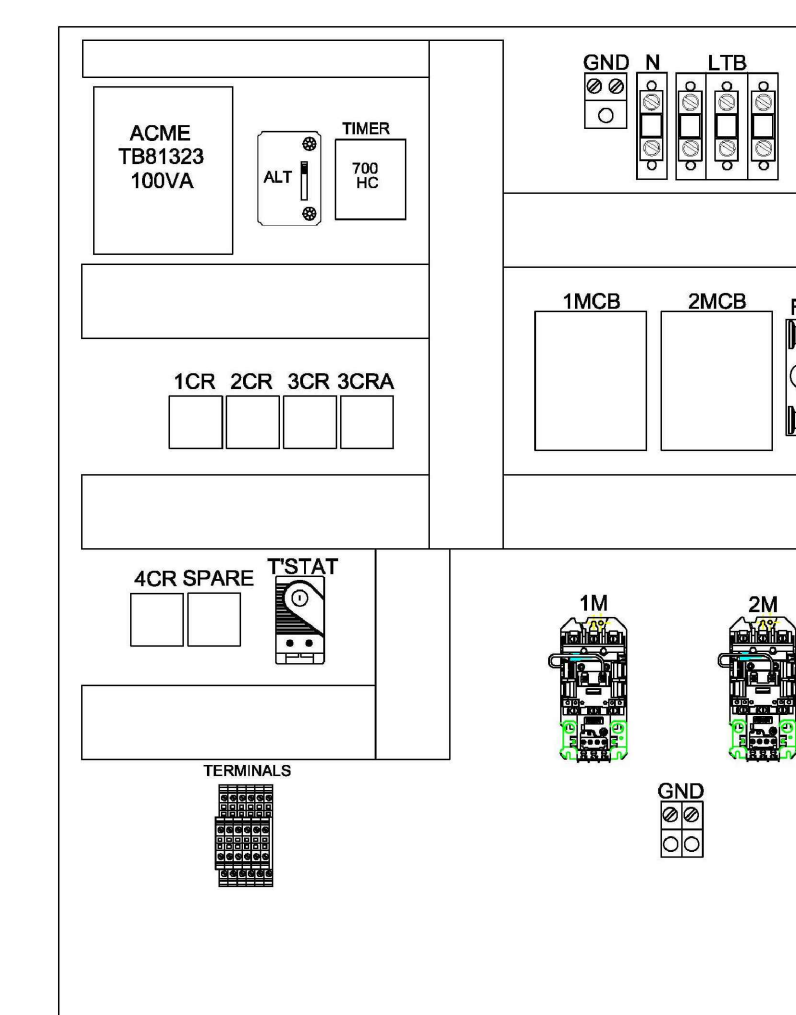
1. NOT USED THIS PROJECT.

- (2) TERMINATE FOUR (4) #12 AWG CONDUCTORS (2 SPARES) FROM SP-104 CONTROL PANEL TO EXISTING SP-103 CONTROL PANEL. CONNECT REMAINING TWO (2) CONDUCTORS IN SP-103 CONTROL PANEL ON ALARM RELAY ACROSS TERMINALS TB1A AND TB1B AS REQUIRED. SEE PICTURE C SHEET E-3.
- (3) DISCONNECT SHALL BE SEIMENS 240 VAC, HRP RATED, CATALOG NO. GFG322NR. FUSE FOR DISCONNECT SEE EQUIPMENT 3 POLE, 4 WIRE, NEMA TYPE 3R. FUSE SHALL BE FLNR60ID.
- (4) NO SUBSTITUTIONS ON ANY EQUIPMENT.
- (5) TO ORDER CONTROL PANEL CONTACT ELECTRIC PUMP & REFERENCE REVISED AS-BUILT DRAWINGS #E1534189-0111 CONTACT NUMBER IS 555-265-2282 COMPANY POC'S: ANDY DANA, OR JEFF JANIKSLA  
NO APPROVED EQALS



## SCALE: NONE

NOTE: NO APPROVED EQUALS 



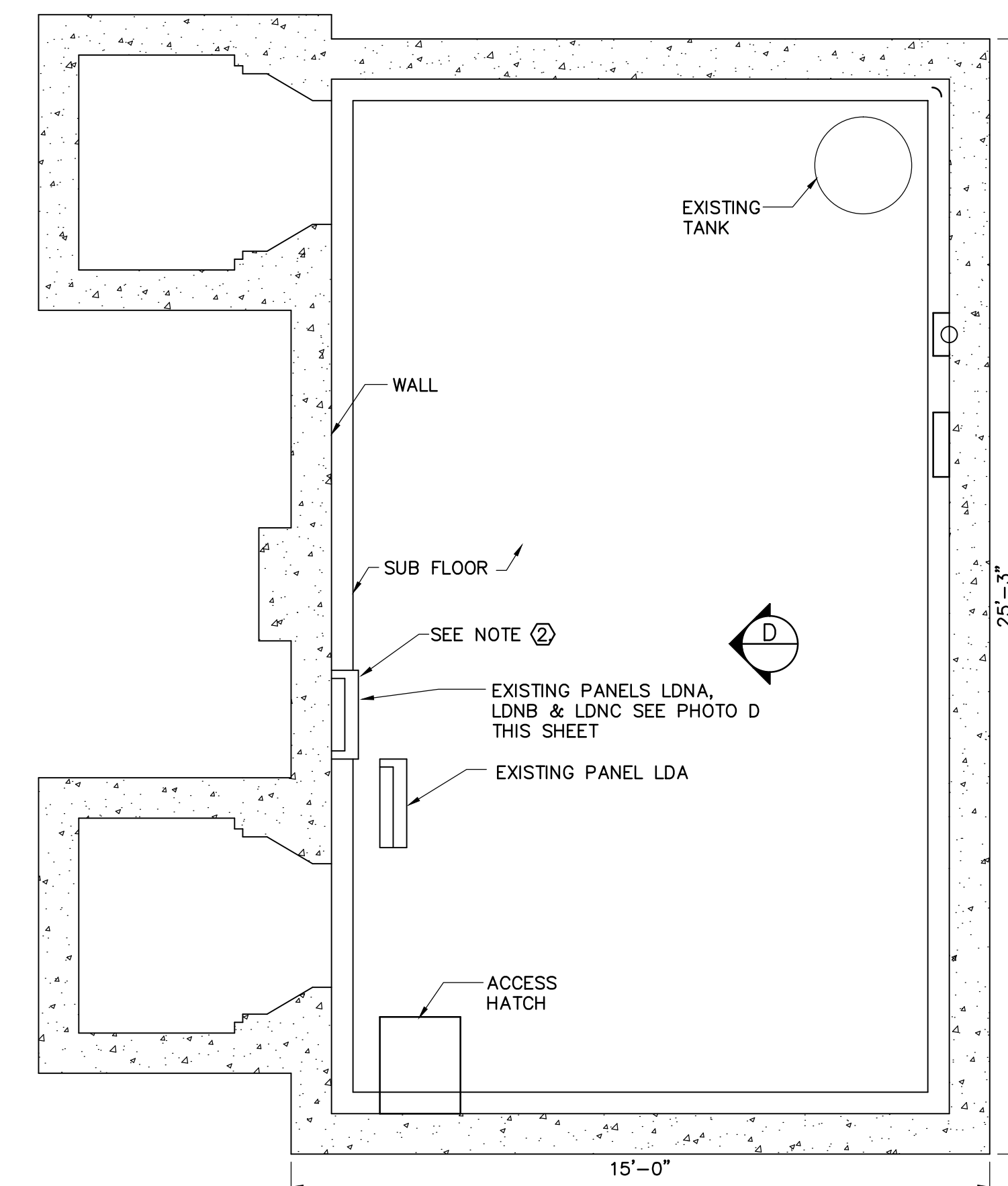
SCALE: NONE

NOTE: NO APPROVED EQUALS 



SCALE: NONE PREVIOUS CONTRACT

- NOTES: (PUMP STATION CONTROL/ENCLOSURE)
- ① PUMP STATION CONTROL ENCLOSURE SHALL BE A HOFFMAN ENCLOSURE 30" X 24" X 12" CONTINUOUS HINGE. HOFFMAN CATALOG NO. A302412LB.
  - ② HEATING CABLE TEMPERATURE SWITCH SHALL BE A NELSON TA4X140.



EXISTING LFSB F



EXISTING TYPICAL PANELS @ LF SITE = 0  
SCALE: NONE (FOR EXAMPLE ONLY)



North Dakota

APPROVED

[illegible]

SHEET TITLE ELECTRICAL PLAN DETAILS & NOTES (CONT.)		
SHEET 6	OF 7	REF SHT. NO. E-2
PROJECT TITLE  CONSTRUCT SUMP PUMP-104		
PROJECT NUMBER CPID 1007885		
FACILITY		LF's



